



RECEIVED
AUG 03 2005
LABOR SERVICES

STATE OF IOWA

THOMAS J. VILSACK, GOVERNOR
SALLY J. PEDERSON, LT. GOVERNOR

DEPARTMENT OF NATURAL RESOURCES
JEFFREY R. VONK, DIRECTOR

August 30, 2005

Kathleen Uehling
Attorney for the Labor Commissioner
Iowa Division of Labor
1000 E. Grand Avenue
Des Moines, IA 50319

Dear Ms. Uehling:

The department has evaluated the proposal for disposal of water from elevator sump pits received from you by email on August 5, 2005. I have attached a copy of the plan with keyed notes to this letter for reference.

We have no objection to the proposal. We understand the need to discharge from elevator sump pits will occur rarely and only in emergency situations, typically during or after a fire. Therefore, we will not require that permits be obtained for these discharges before they occur. Instead we expect this department will be contacted prior to activating a sump pump for advice on how and where the water should be disposed (sanitary sewer, storm sewer, ground surface, etc.) to prevent or minimize the release of pollutants to the environment. This contact should be made by calling the state emergency spill response number at 515-281-8694.

Sincerely,

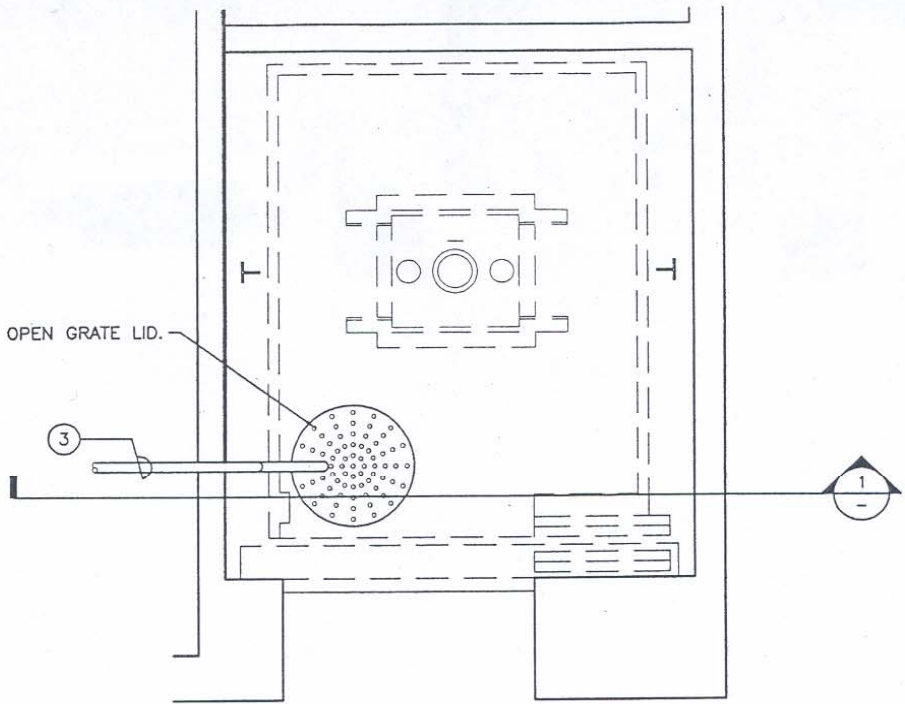
A handwritten signature in cursive script that reads "Steven N. Williams".

Steven N. Williams
Environmental Specialist Senior
NPDES Section

Enclosure: Elevator Sump Pit Design Drawing

c: Dave Neil, Labor Commissioner,
Iowa Association of Building Officials
James R. McConeghey, Brooks Borg Skiles Architecture Engineering
Susan Oltrogge, Brooks Borg Skiles Architecture Engineering
The Honorable Geri Huser
Dave Epley, House Democrat Staff
Kathleen Lee, IDNR Emergency Response

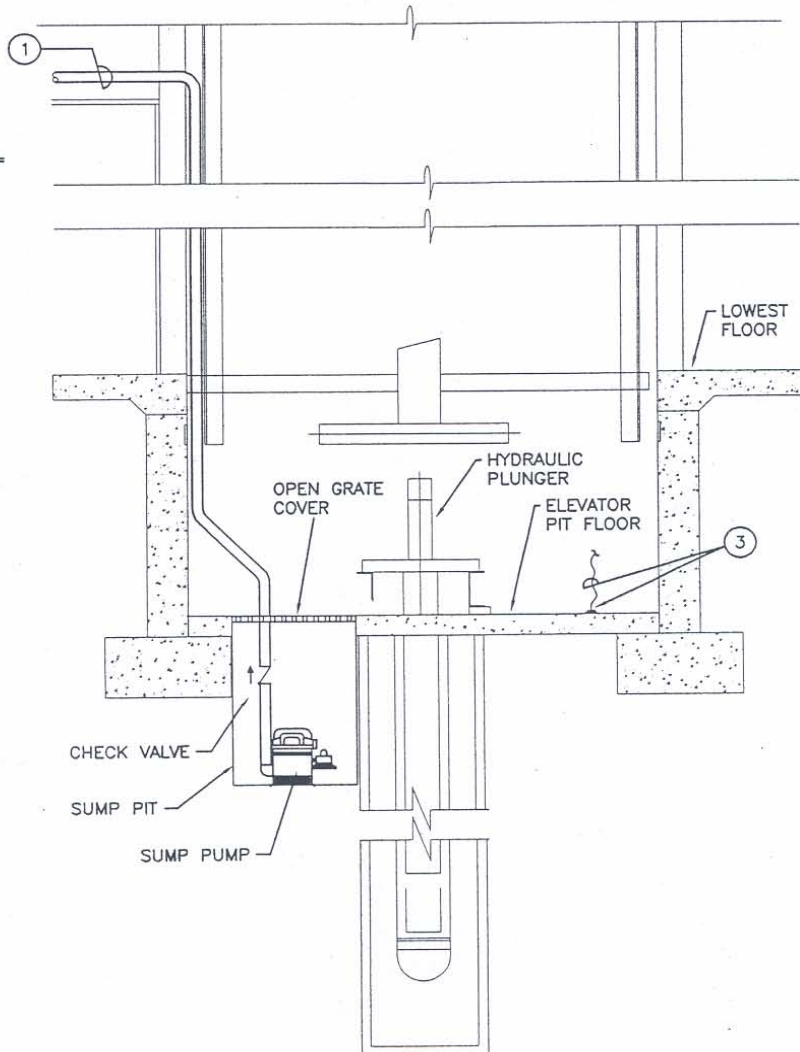
SUMP BASIN WITH OPEN GRATE LID.



A ELEVATOR PIT PLAN
NOT TO SCALE

KEYED NOTES

- ① DISCHARGE AT APPROXIMATELY 18" ABOVE GRADE EXTERIOR TO THE BUILDING. PIPE SHALL TERMINATE THROUGH EXTERIOR WALL WITH TURNDOWN ELBOW AND NIPPLE WITH PIPE THREADS AT DISCHARGE END TO PROVIDE FOR EXTENSION OF PIPING TO COLLECTION CONTAINER IF NECESSARY. PROVIDE REMOVABLE INSECT SCREEN AT DISCHARGE OPENING.
- ② SUMP PUMP SHALL BE WIRED THROUGH KEYED SWITCH. PROVIDE KEYS TO FIRE DEPARTMENT AND OWNER. PUMP SHALL BE MANUALLY ACTIVATED BY KEYED SWITCH TO EVACUATE SUMP PIT.
- ③ AT OWNER'S OPTION INSTALL WATER DETECTOR IN BASE OF ELEVATOR PIT AND CONNECT TO LOCAL OR BUILDING SYSTEM ALARM.



1 ELEVATOR PIT SECTION
NOT TO SCALE